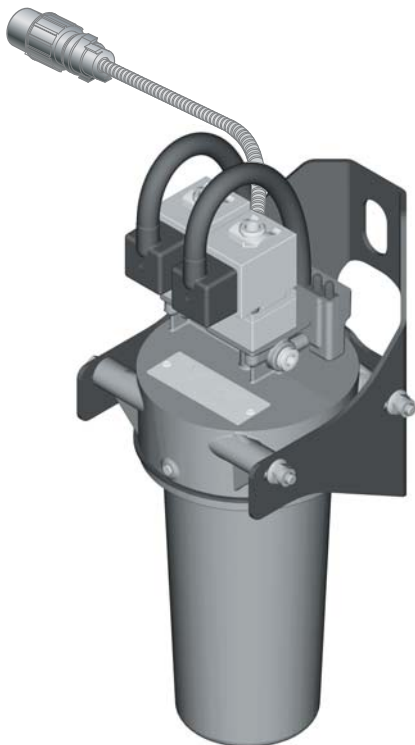


# MOUNTING INSTRUCTION

2012-06-20 38-236800a



## 07-113000



**DE** VBG Mechatric

**DK** VBG Mechatric

**EE** VBG Mechatric

**FI** VBG Mechatric

**FR** VBG Mechatric

**GB** VBG Mechatric

**LV** VBG Mechatric

**NL** VBG Mechatric

**NO** VBG Mechatric

**PL** VBG Mechatric

**RU** VBG Mechatric

**SE** VBG Mechatric



Montageanleitung  
 Monteringvejledning  
 Paigaldusjuhend  
 Asennusohje

Instructions de montage  
 Mounting instruction  
 Montāžas instrukcija  
 Montagehandleiding

Monteringsanvisning  
 Instrukcja montażowa  
 Указания по монтажу  
 Monteringsanvisning



Funktionskontrolle  
 Funktionskontrol  
 Talitluskontroll  
 Toiminnan tarkastus

Vérification des fonctions  
 Function check  
 Darbības pārbaude  
 Functiecontrole

Funksjonskontroll  
 Kontrola działania  
 Контроль функций  
 Funktionskontroll



Hinweise für den Fahrer  
 Betjeningsvejledning  
 Juhi kasutusjuhend  
 Kuljettajan ohjeet

Instructions du conducteur  
 Driver's manual  
 Vadītāja rokasgrāmata  
 Gebruikshandleiding

Førerinstruks  
 Podręcznik kierowcy  
 Инструкция для водителя  
 Monteringsanvisning



Visuelle Kontrolle  
 Visuel kontrol  
 Visuaalne kontroll  
 Silmämääräinen tarkastus

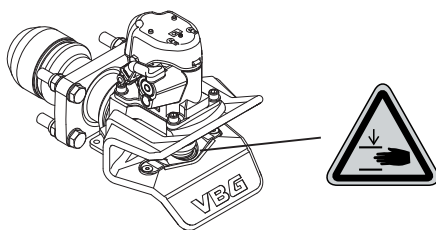
Contrôle visuel  
 Visual check  
 Vizuālā pārbaude  
 Visuele controle

Visuell kontroll  
 Kontrola wzrokowa  
 Визуальный контроль  
 Visuell kontroll

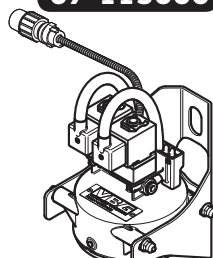


Anweisungen des LKW-Herstellers  
 Lastbilfabrikantens anvisning  
 Haagise tootja juhised  
 Ajoneuvon valmistajan ohjeet  
 Indications du constructeur du véhicule  
 Vehicle manufacture instruction

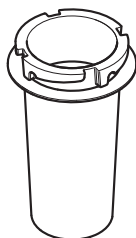
Autorūpnīcas instrukcija  
 Instructies vrachtwagenfabrikant  
 Lastebilprodusentens anvisning  
 Instrukcja producenta pojazdu  
 Указание изготовителя грузового автомобиля  
 Lastvagnstillverkarens anvisning



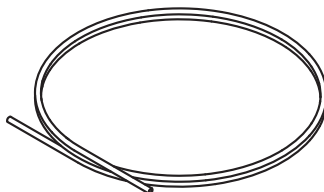
**07-113000**



x 1



x 1



x 1



x 1



x 1

**DE Allgemeines**  
*Vor der Montage alle Teile identifizieren. Montage und Wartung müssen sorgfältig und fachmännisch durchgeführt werden.*

**DK Generelt**  
*Kontroller at alle dele er til stede inden montering. Montering og service skal foretages omhyggeligt og fagmæssigt.*

**EE Üldist**  
*Määratlege kõik osad enne monteerimist. Paigaldus ja hooldus tuleb teostada hoolikalt ja professionaalselt.*

**FI Yleistä**  
*Tunnista kaikki osat ennen asennusta. Asennus ja huolto on suoritettava huolellisesti ja ammattimaisesti.*

**FR Généralités**  
*Identifier toutes les pièces avant le montage. Le montage et l'entretien doivent être effectués avec le plus grand soin et selon les règles de l'art.*

**GB General**  
*Identify all parts before installation. Installation and service should be carried out carefully and professionally.*

**LV Vispārēja informācija**  
*Pirms montāžas identificējiet visas detaļas. Montāža un serviss ir jāveic rūpīgi un profesionāli.*

**NL Algemeen**  
*Voor de montage moet u alle onderdelen identificeren. Voer montage en service zorgvuldig en deskundig uit.*

**NO Generelt**  
*Identifiser alle deler før montering. Montering og service skal utføres nøyaktig og fagmessig.*

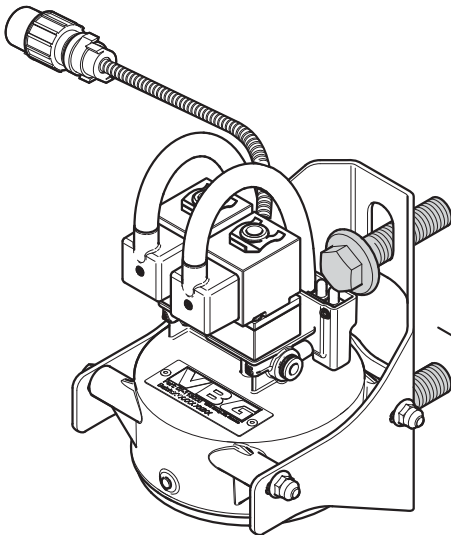
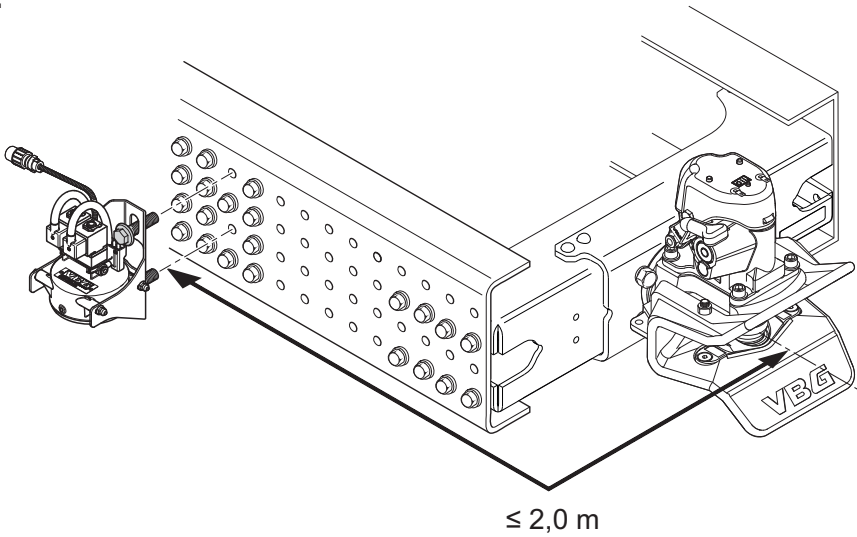
**PL Informacje ogólne**  
*Zapoznaj się z poszczególnymi częściami przed przystąpieniem do montażu. Czynności montażowe i serwisowe należy wykonywać dokładnie i fachowo.*

**RU Общая информация**  
*Монтаж и обслуживание должны осуществляться тщательно и профессионально.*

**SE Allmänt**  
*Identifiera alla delar före montering. Montering och service skall utföras noggrant och fackmannamässigt.*

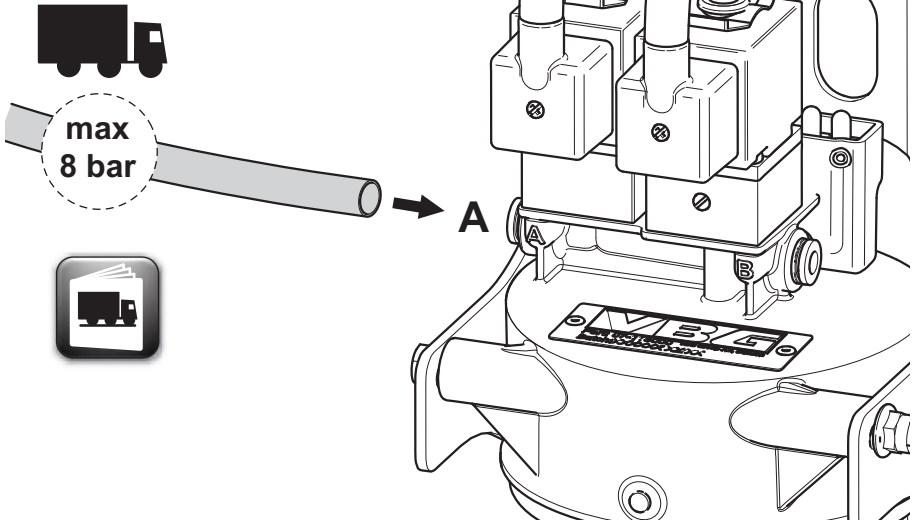


1.

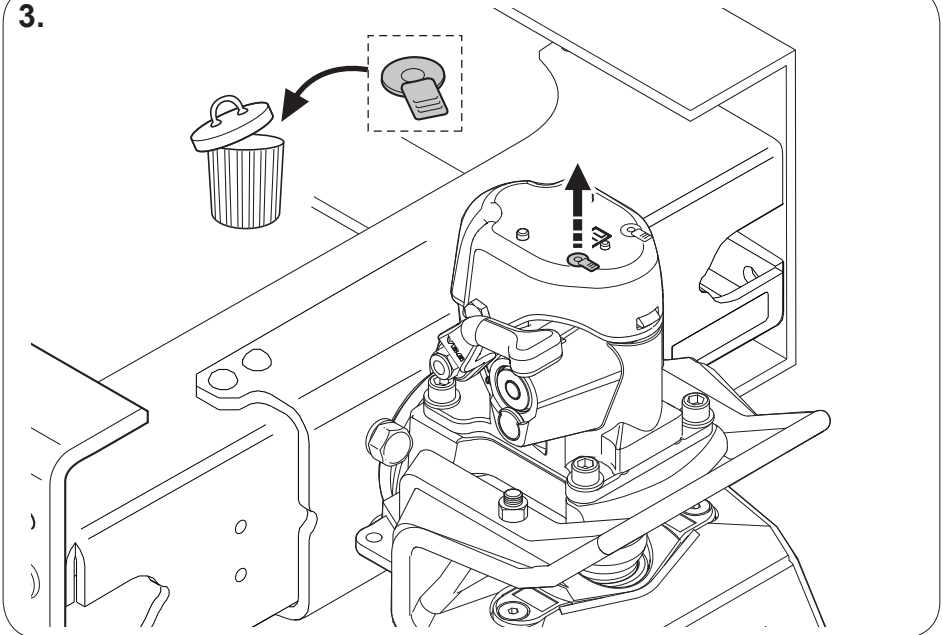


2 x M16/M14

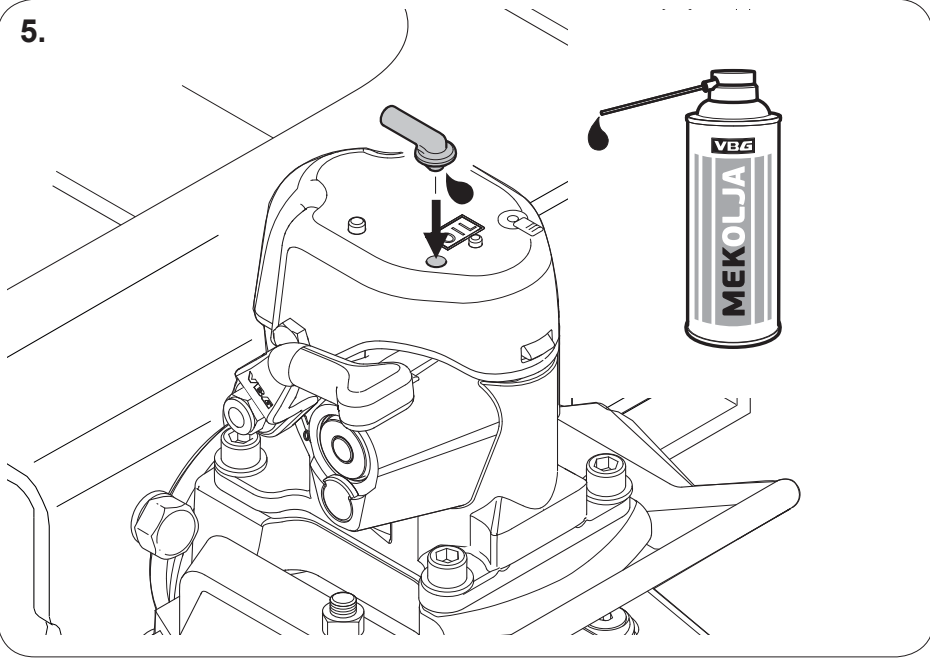
2.



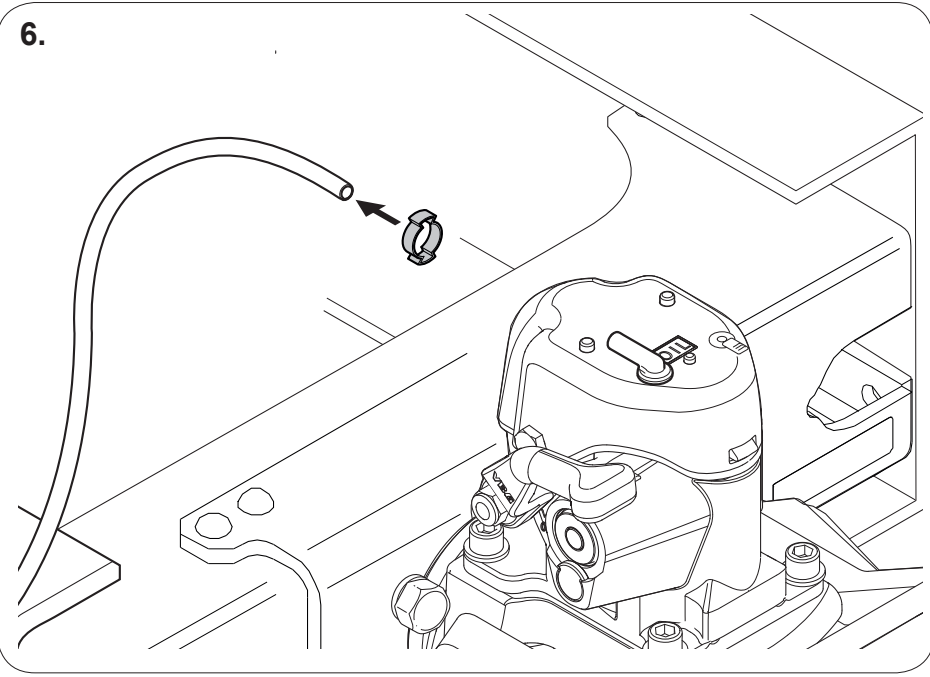
3.

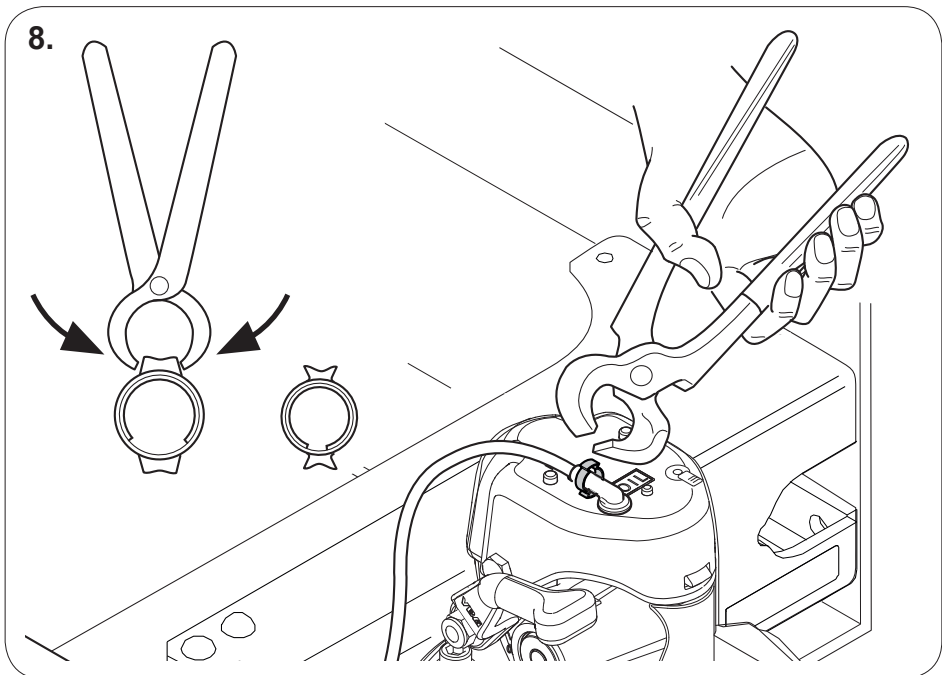
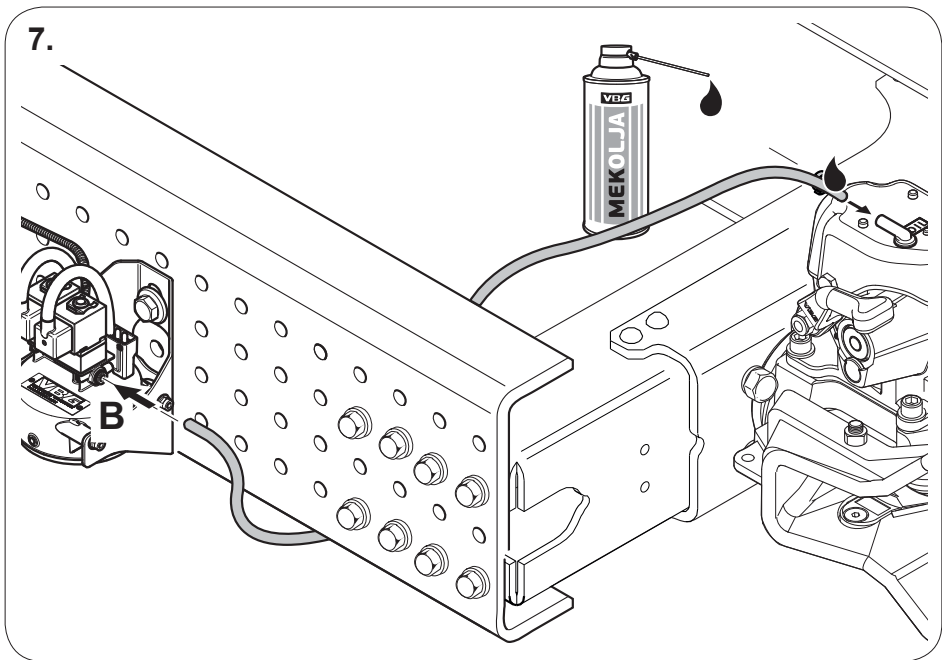


5.

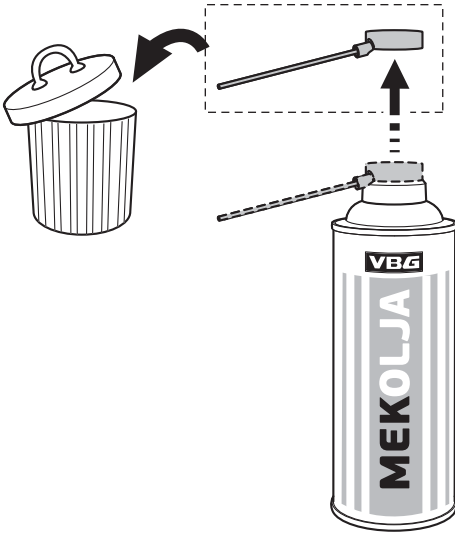


6.

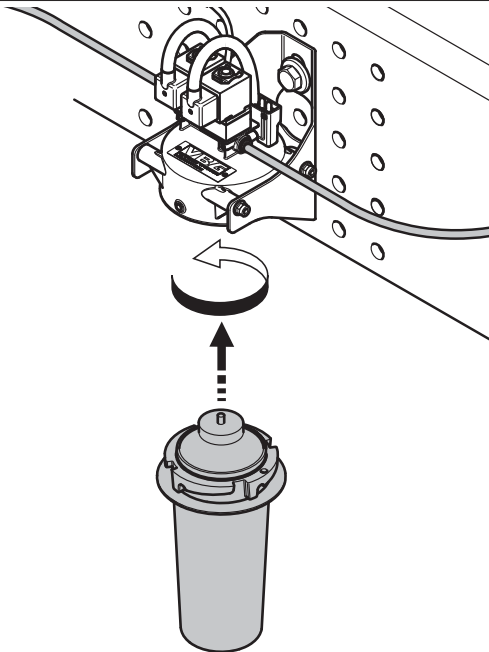




9.

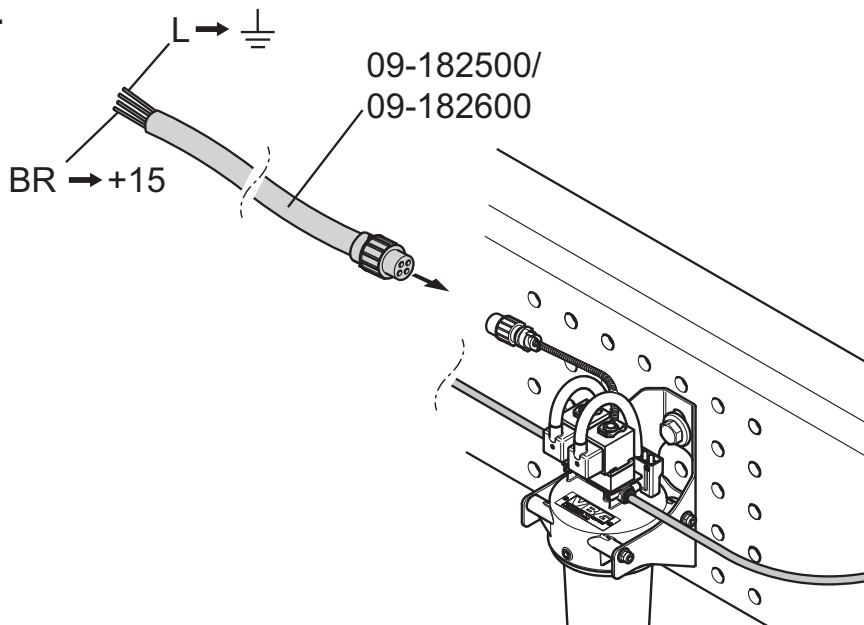


10.



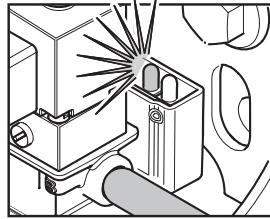
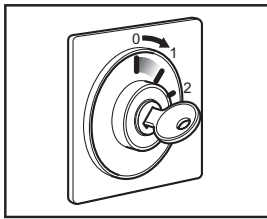


11.

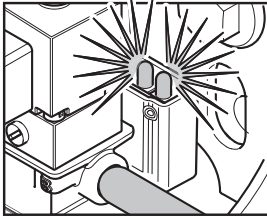


	DE	DK	EE	FI	FR	GB
<b>L</b>	Blau	Blå	Sinine	Sininen	Bleu	Blue
<b>BR</b>	Braun	Brun	Pruun	Ruskea	Brun	Brown

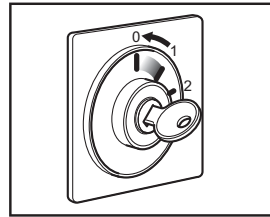
	LV	NL	NO	PL	RU	SE
<b>L</b>	Zils	Blauw	Blå	Niebieski	Синий	Blå
<b>BR</b>	Brūns	Bruin	Brun	Brązowy	Коричневый	Brun



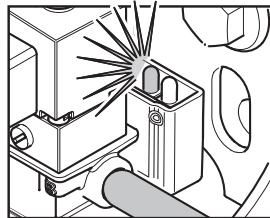
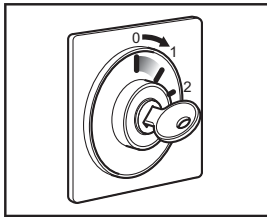
1 sek.



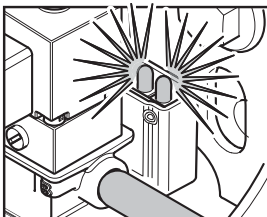
2 sek.



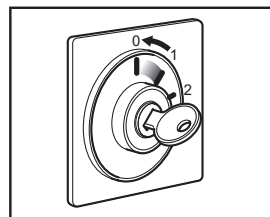
2 sek.



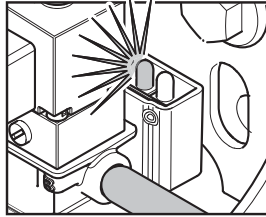
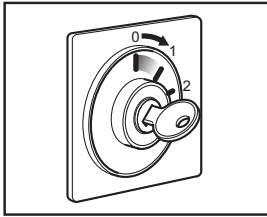
1 sek.



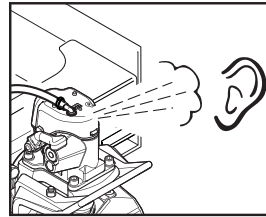
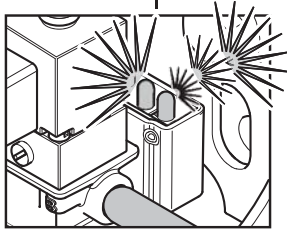
2 sek.



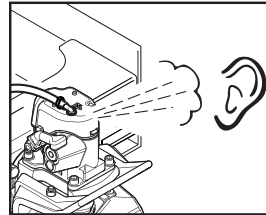
2 sek.



1 sek.

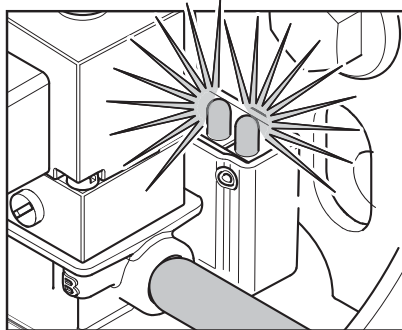
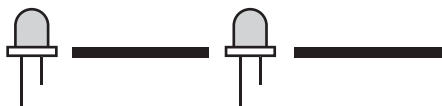
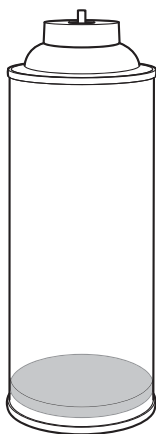


1 sek.

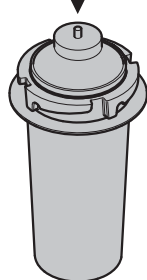
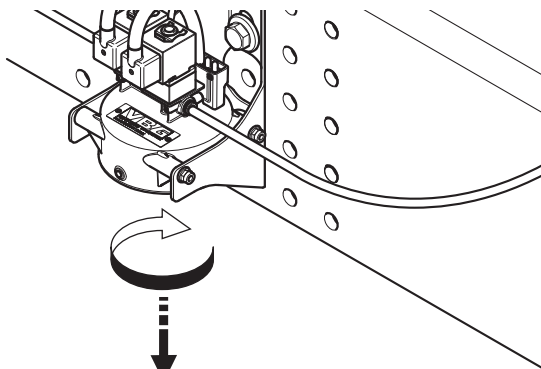




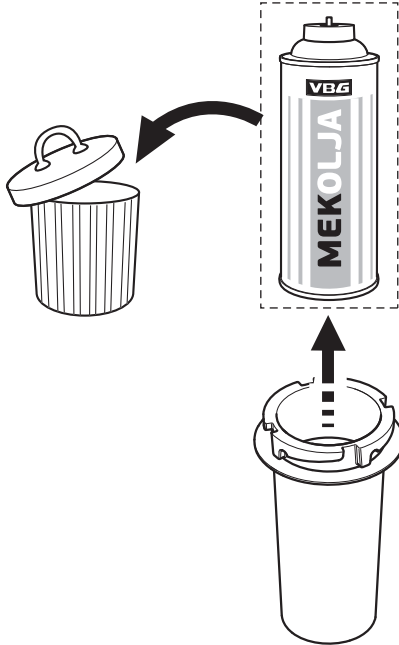
1.



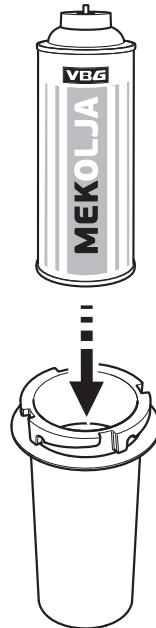
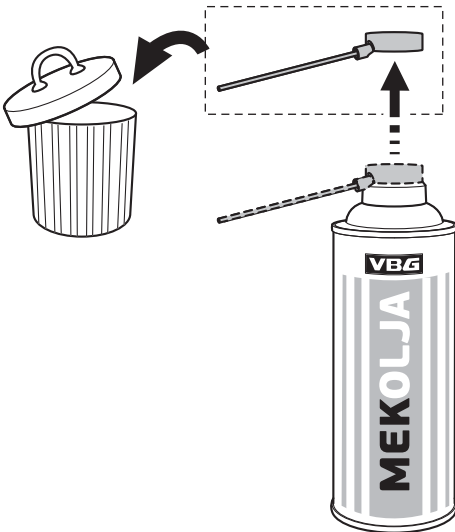
2.



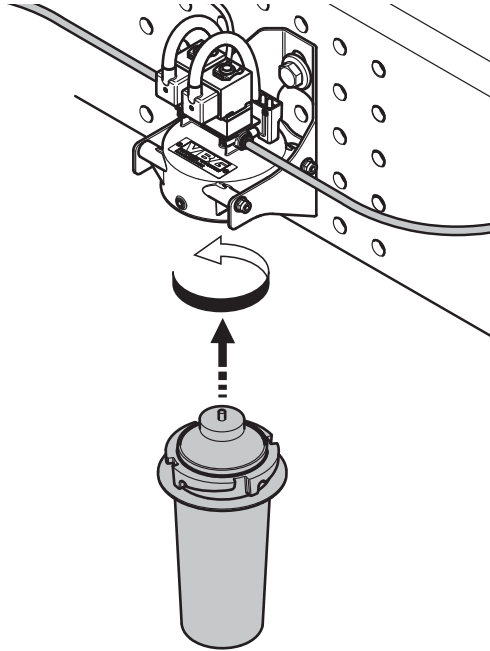
3.



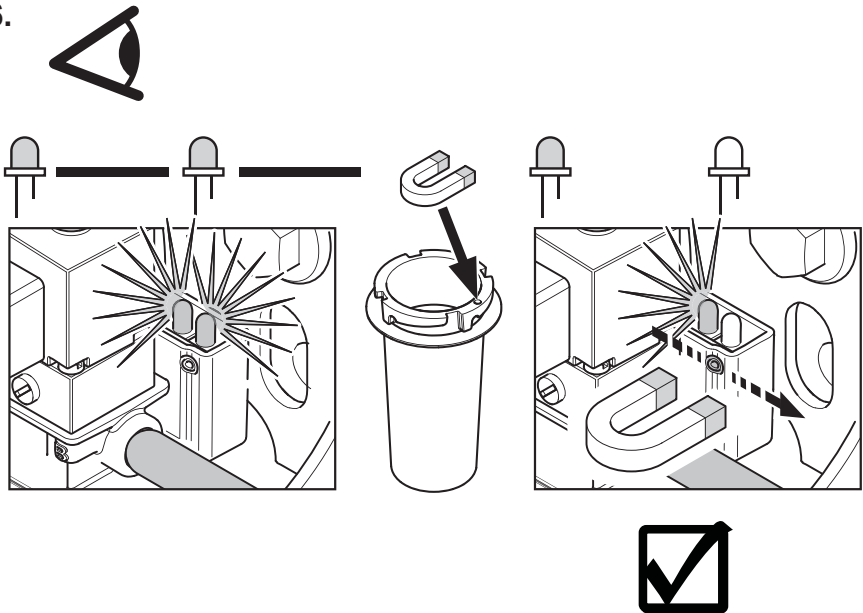
4.



5.



6.





Member of VBG GROUP  
[www.vbg.eu](http://www.vbg.eu)



**The strong connection**